



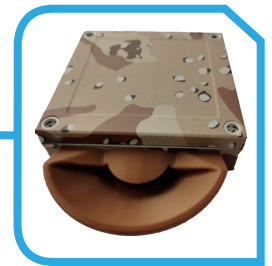
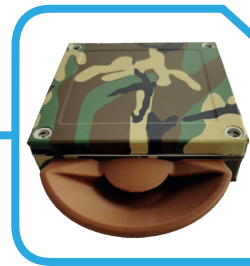
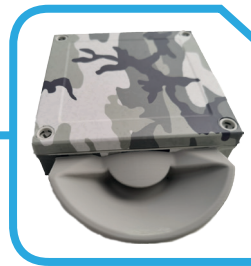
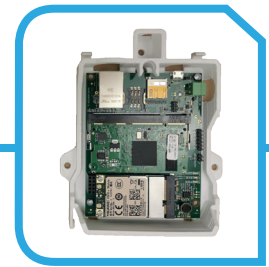
Outdoor

- IP67 certified casing
- from -40°C till +60°C
- durable polycarbonate enclosure
- easy installation - the device does not require any data infrastructure
- highly customisable



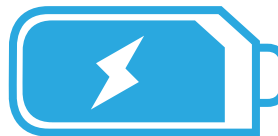
Indoor

- prepared for wall mounting



Hardware for remote locations

- battery powered version (works up to 30h from battery, charges automatically when power is restored)
- solar powered version (powered from 10w solar panel and battery)



Battery life up to 30h.

Low device consumption ~ 1w

Connectivity

- GSM or UTP

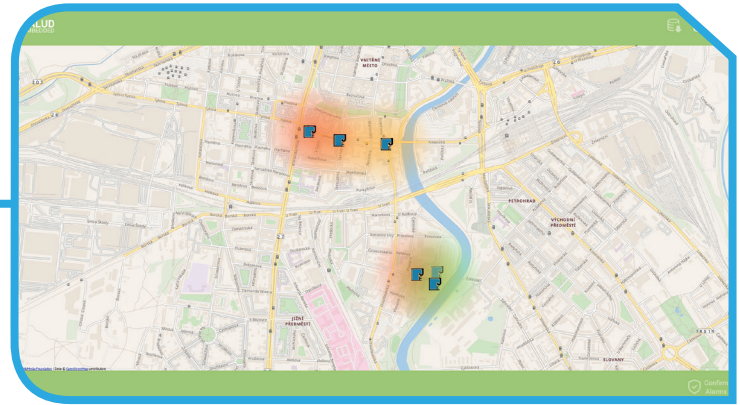
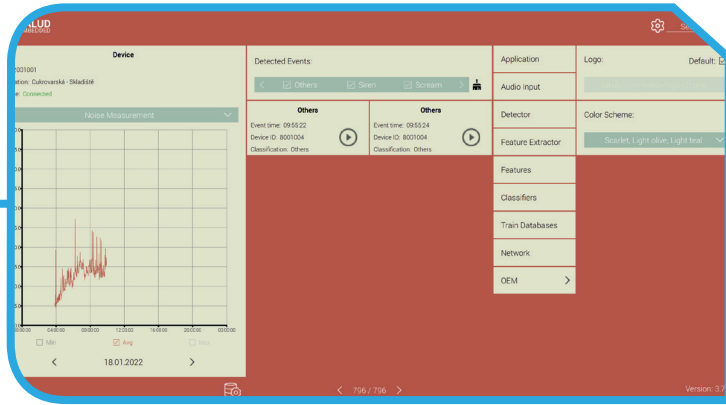
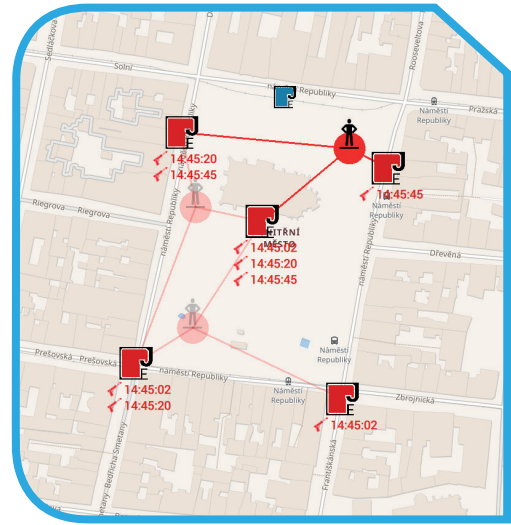




- Events processed directly in the device, no ethical issues.
- localization
- detects glassbreak, gunshot and screams and other dangerous events with noise measurement data

Noise measurement

- heat maps
- graphs



- supporting all 3rd-party software platforms that provide the access over open API interface



Just adds another sense to the cameras – an ear.

JALUD Embedded s.r.o.
 Nepomucká 1355/261
 CZ-326 00 Plzeň
 Česká Republika

Lukas Svoboda
 Managing Director
 +420 602 765 042
 lukas.svoboda@jalud-embedded.com

